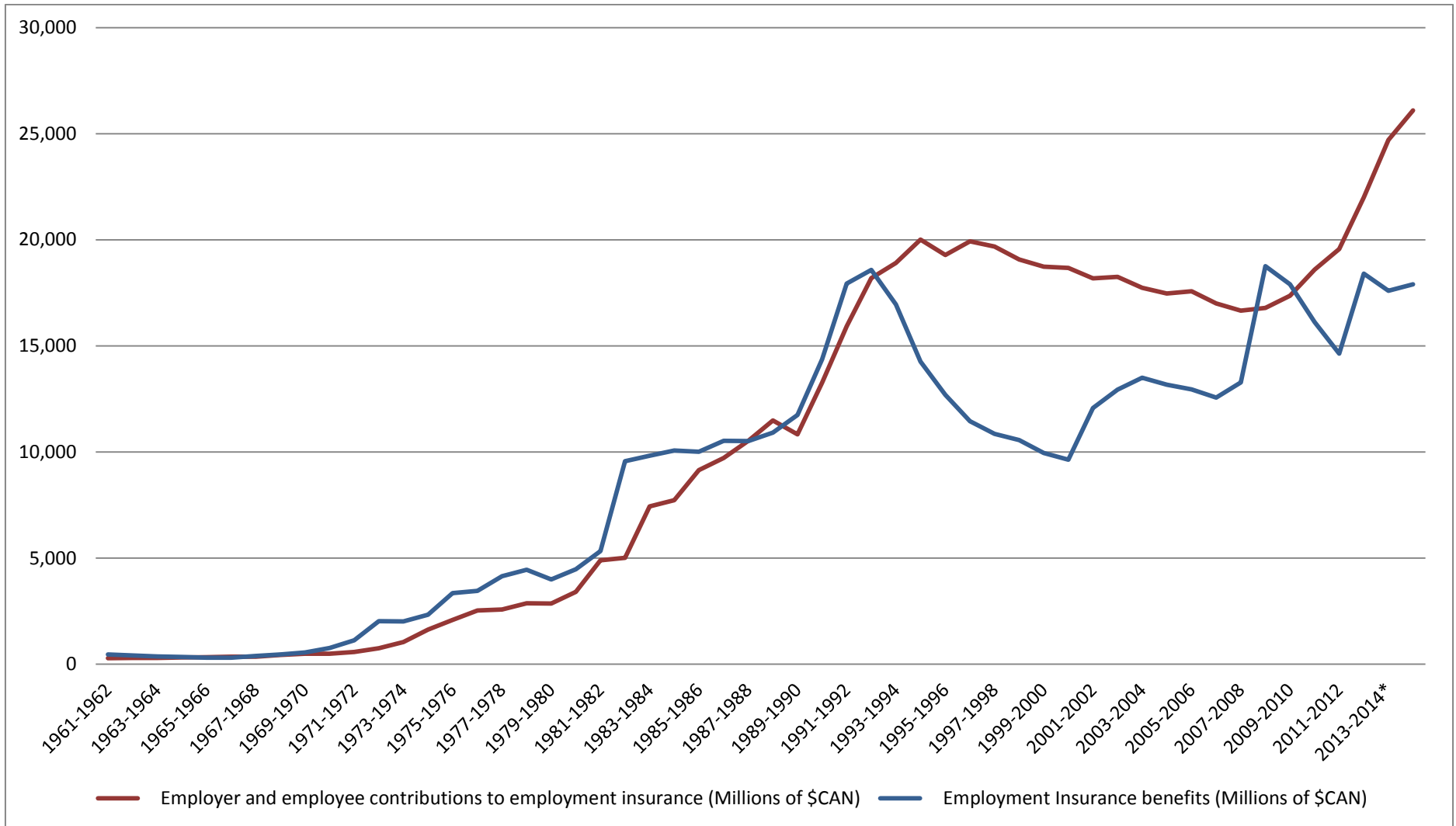


EI Premiums and Benefits by Year, 1961-1962 to 2014-2015*



Fiscal Year	Employer and employee contributions to employment insurance (Millions of \$CAN)	Employment Insurance benefits (Millions of \$CAN)	Fiscal Year	Employer and employee contributions to employment insurance (Millions of \$CAN)	Employment Insurance benefits (Millions of \$CAN)
1961-1962	\$278	\$454	1977-1978	\$2,576	\$4,139
1962-1963	\$286	\$403	1978-1979	\$2,865	\$4,446
1963-1964	\$296	\$366	1979-1980	\$2,857	\$3,988
1964-1965	\$314	\$335	1980-1981	\$3,400	\$4,476
1965-1966	\$329	\$297	1981-1982	\$4,894	\$5,327
1966-1967	\$343	\$307	1982-1983	\$5,011	\$9,569
1967-1968	\$347	\$389	1983-1984	\$7,436	\$9,819
1968-1969	\$434	\$459	1984-1985	\$7,729	\$10,063
1969-1970	\$492	\$542	1985-1986	\$9,147	\$10,013
1970-1971	\$495	\$758	1986-1987	\$9,717	\$10,520
1971-1972	\$571	\$1,123	1987-1988	\$10,521	\$10,507
1972-1973	\$743	\$2,021	1988-1989	\$11,480	\$10,904
1973-1974	\$1,043	\$2,014	1989-1990	\$10,829	\$11,738
1974-1975	\$1,622	\$2,329	1990-1991	\$13,266	\$14,363
1975-1976	\$2,087	\$3,341	1991-1992	\$15,916	\$17,937
1976-1977	\$2,528	\$3,457	1992-1993	\$18,188	\$18,573

Fiscal Year	Employer and employee contributions to employment insurance (Millions of \$CAN)	Employment Insurance benefits (Millions of \$CAN)	Fiscal Year	Employer and employee contributions to employment insurance (Millions of \$CAN)	Employment Insurance benefits (Millions of \$CAN)
1993-1994	\$18,904	\$16,954	2009-2010	\$17,366	\$17,902
1994-1995	\$20,003	\$14,253	2010-2011	\$18,585	\$16,124
1995-1996	\$19,284	\$12,694	2011-2012	\$19,560	\$14,628
1996-1997	\$19,923	\$11,451	2012-2013*	\$22,000	\$18,400
1997-1998	\$19,674	\$10,847	2013-2014*	\$24,700	\$17,600
1998-1999	\$19,069	\$10,562	2014-2015*	\$26,100	\$17,900
1999-2000	\$18,732	\$9,945			
2000-2001	\$18,676	\$9,633			
2001-2002	\$18,183	\$12,071			
2002-2003	\$18,247	\$12,938			
2003-2004	\$17,737	\$13,499			
2004-2005	\$17,463	\$13,168			
2005-2006	\$17,570	\$12,943			
2006-2007	\$17,001	\$12,561			
2007-2008	\$16,663	\$13,275			
2008-2009	\$16,790	\$18,755			

*Finance Canada Projection

Sources:

- 1961-1962 to 2011-2012: Statistics Canada Income and expenditure sub-sector accounts, federal government, Table 380-0034
- 2012-2013 to 2014-2015: Finance Canada Update of Economic and Fiscal Projection